



OMNI Series

AN EVERLAST™ EXCLUSIVE

EACH GENERATION HAS IT BETTER THAN BEFORE



Quality Performance. Lifetime Warranty.

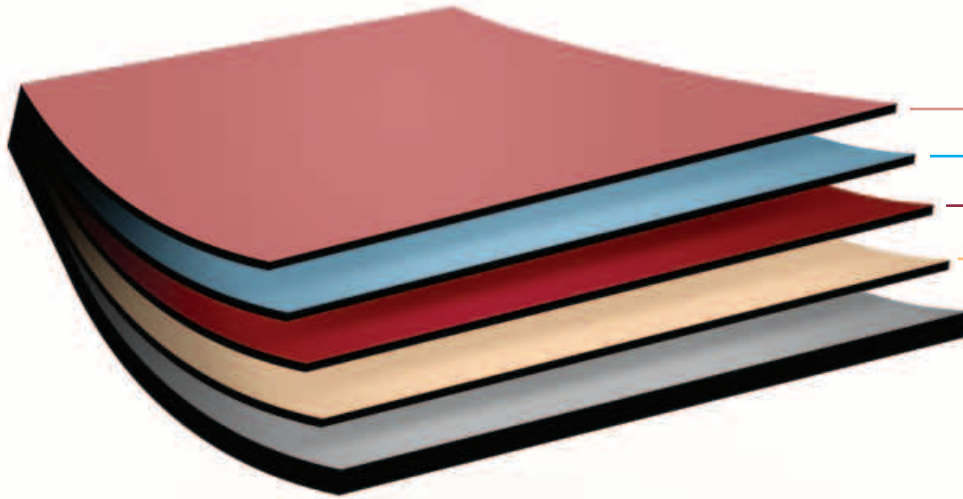
OMNI is the next generation—providing even better paint adhesion and unparalleled barrier protection to the already proven Everlast process. This generation of panels proves to be so invincible that—even though we offer it—

you may never get a chance to use OMNI's lifetime warranty. Benefit from the next step in Everlast's commitment to advancing metal roofing reliability and longevity with the highest quality components in the industry.

Here at Everlast™ our success is strongly attributed to our striving for ever-increased quality, service and dedication. Our quality can be seen throughout our panel, starting with the purchase of raw materials, proprietary heat-forming technology, and innovative processes through continuous product development and research.

**NOW, MORE
THAN EVER,
THE EVERLAST™
NAME SAYS
IT ALL.**

AND THIS GENERATION IS NO DIFFERENT



TOPCOAT

Everlast Synergy Paint System offers the highest quality siliconized polyester coating system the industry has to offer.

OMNI ENHANCED PRIMER

In combination with our Synergy Paint System, the primer offers additional corrosion protection, superior resistance to moisture and UV rays plus excellent flexibility and abrasion resistance.

CHROMATE PRE-TREATMENT

A complex oxide bonds the paint to the Galvalume substrate resulting in superior adhesion of the primer.

GALVALUME COATING

Delivers the best protective characteristic features of aluminum and zinc.

FULL HARD STEEL

.015 min. full hard high tensile steel with 95,000 psi min. yield.



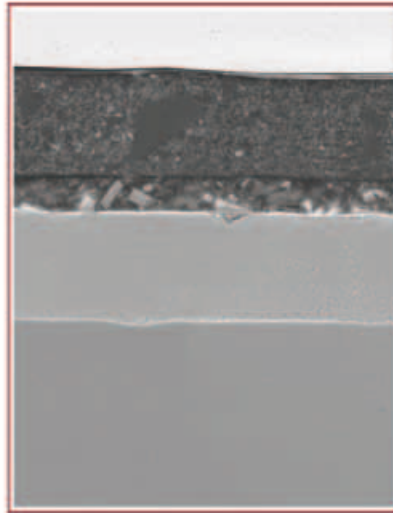
Cross section view of Everlast II® panel

OMNI SERIES

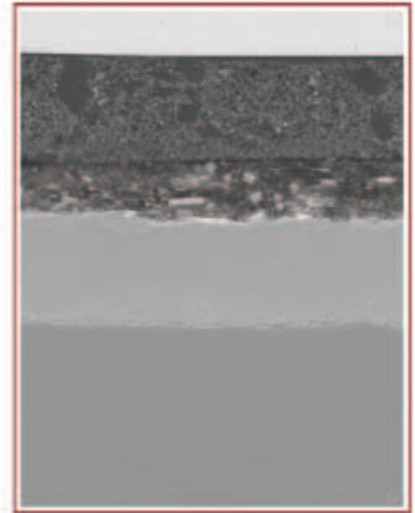
7 OMNI ENHANCED PRIMER

During the natural oxidation process, rust becomes the by-product of water's affect on bare metal. Research has shown that a quality primer provides significant barrier protection and increases the efficiency of paint adherence.

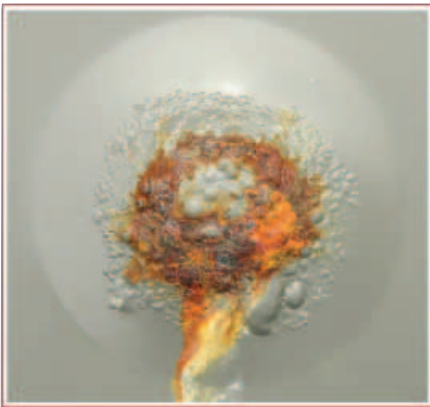
Everlast Roofing has once again raised the bar on product performance with the **OMNI Enhanced Primer**. Developed with the latest technology, the OMNI Enhanced Primer provides a thicker, more resistant raw material layer of defense against corrosion while promoting superior paint adherence and flexibility.



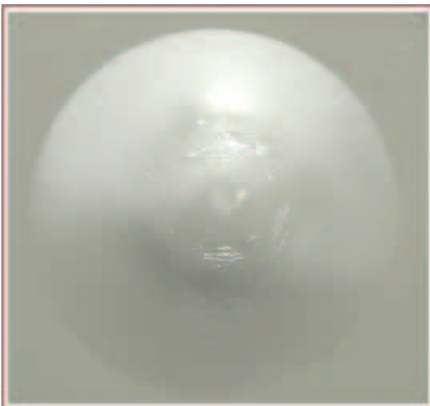
Cross section of a competitor panel



Cross section of an Everlast II® OMNI panel



Overview of a competitor panel exposed to 1,500 hours of accelerated acid rain testing



Overview of an Everlast II® OMNI panel exposed to 1,500 hours of accelerated acid rain testing

PROVEN PROTECTION FROM THE PRODUCT WITH COHESIVE ELEMENTS

Effective barrier protection of steel against corrosive elements (such as the atmosphere and water) extends the life of the panel and preserves material investments. By combining the remarkable quality of Galvalume's corrosion protection with a corrosion inhibitor top coat system, the Everlast II® OMNI panel brings cohesive elements together to form a superior protection system.

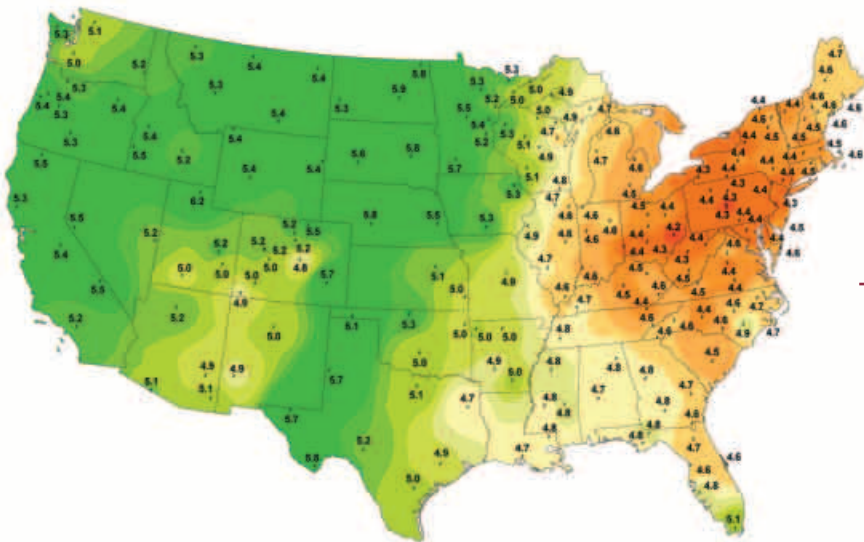
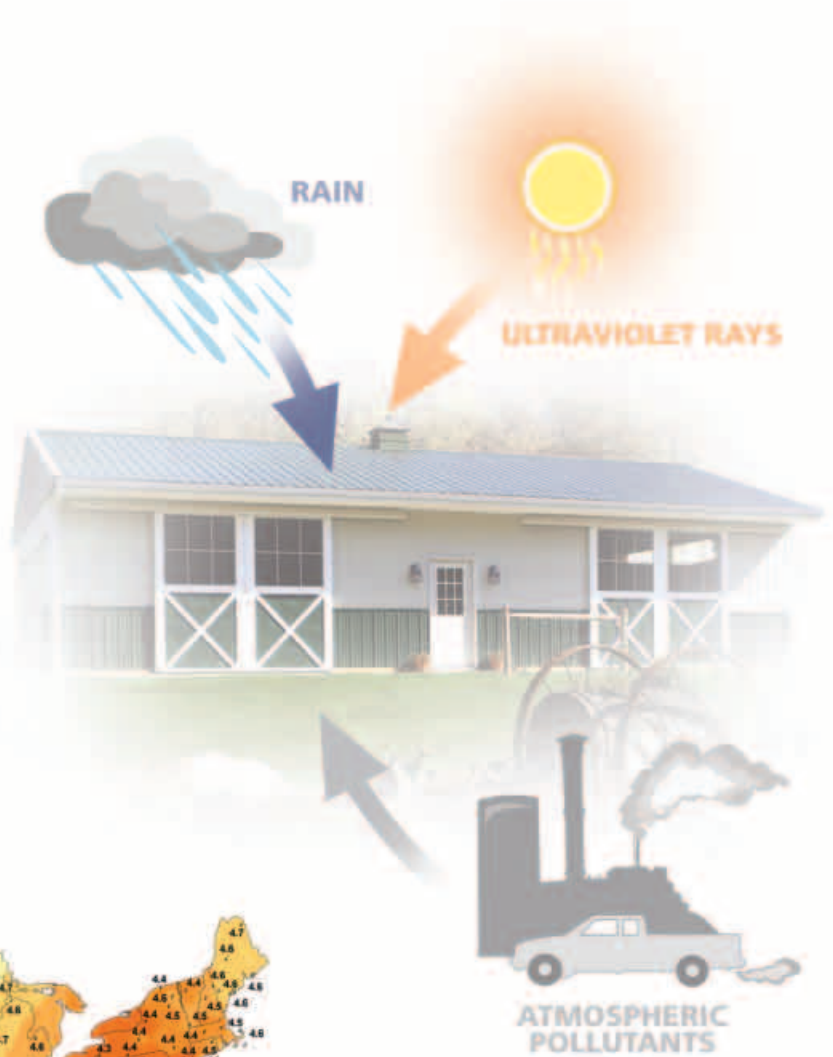


TECHNOLOGY

2 SYNERGY PAINT SYSTEM

Customers rely on Everlast's in-depth analysis of product performance which will reflect on the longevity and esthetic values of their construction projects. Research on the Synergy Paint System is based on real outdoor exposure utilizing all weather elements in Southern Florida. These "real world" results — not simply accelerated laboratory tests—have shown that the Synergy Paint System delivers the strongest SMP system in the industry. Through the toughest tests of nature and time, it has proven to provide...

- Improved chalk resistance
- Improved fade resistance
- Improved gloss retention
- Excellent color durability
- Good resistance to atmospheric staining and dirt residue



Lab pH

■ ≥ 5.3	■ 4.9 - 5.0	■ 4.5 - 4.6
■ 5.2 - 5.3	■ 4.8 - 4.9	■ 4.4 - 4.5
■ 5.1 - 5.2	■ 4.7 - 4.8	■ 4.3 - 4.4
■ 5.0 - 5.1	■ 4.6 - 4.7	■ < 4.3

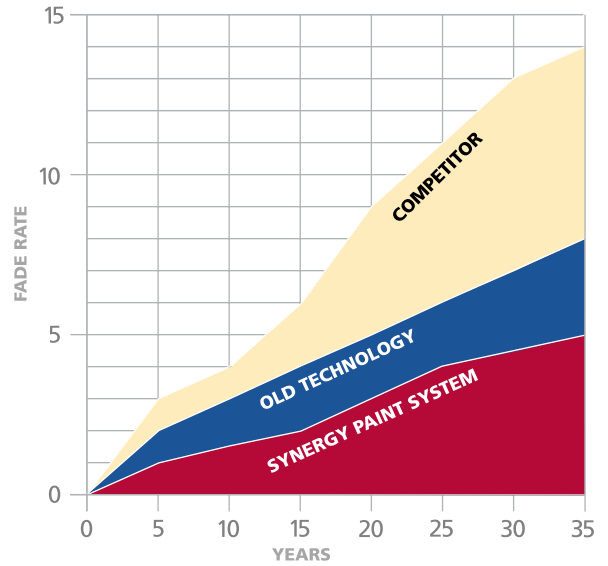
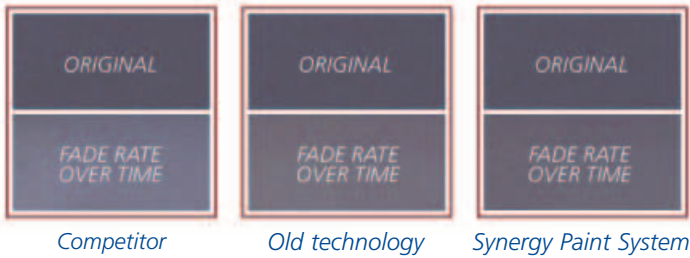
UV rays, acid rain, atmospheric pollutants and other environmental conditions often cause a panel to fade and chalk. The Synergy Paint System utilizes a superstrong siliconized polyester resin proven to reduce the effects of elements and influences which can degrade coatings.

THAT IS TOUGHER

SUPERIOR FADE RESISTANCE

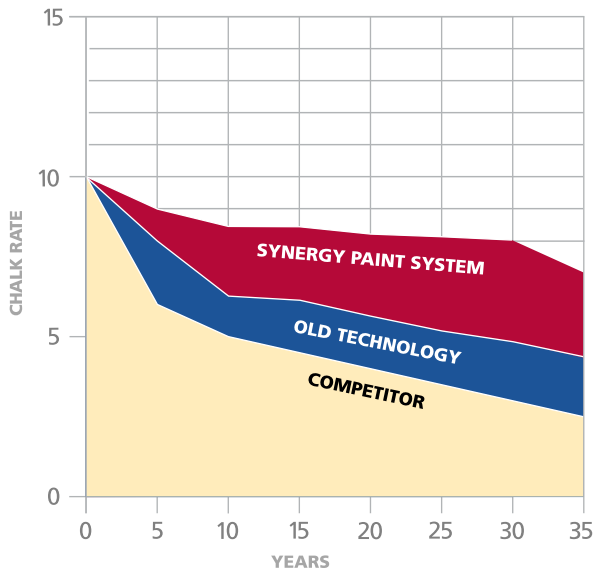
LOWER IS BETTER

A gradual change in the panel's paint color or gloss is known as fading. Fading occurs when there is a breakdown in the pigment caused by direct panel exposure to the sun's UV rays.



FADE RATE: LOWER IS BETTER

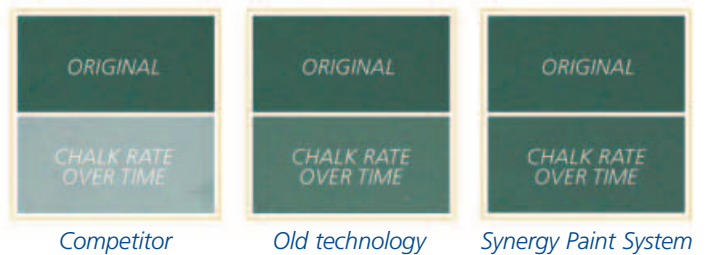
	0	5	10	15	20	25	30	35	YEARS
SYNERGY PAINT SYSTEM	0	1	1.5	2	3	4	4.5	5	
OLD TECHNOLOGY	0	2	3	4	5	6	7	8	
COMPETITOR	0	3	4	6	9	11	13	14	



SUPERIOR CHALK RATE

HIGHER IS BETTER

A white powdery residue or appearance on the surface of the panel is evidence of chalking. Chalking is a direct result of a breakdown in the resin that is, most often, the result of environmental weathering.



CHALK RATE: HIGHER IS BETTER

	0	5	10	15	20	25	30	35	YEARS
SYNERGY PAINT SYSTEM	10	9	8.5	8.5	8.2	8.1	8	7	
OLD TECHNOLOGY	10	8	6.2	6.1	5.7	5.1	4.9	4.3	
COMPETITOR	10	6	5	4.5	4	3.5	3	2.5	

PERFORMANCE

3

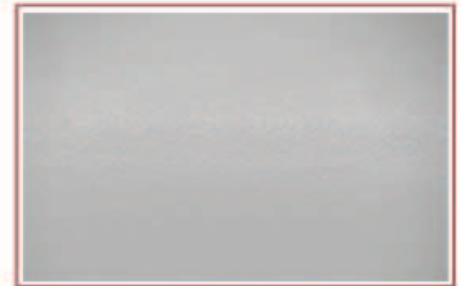
HEAT FORMING™

EVERLAST II® OMNI HEAT FORMED™ PANEL MAJOR RIB vs. TYPICAL ROLL FORMED MAJOR RIB

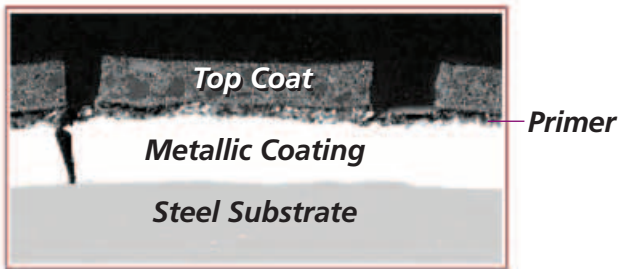
Cracks in the paint allow moisture—is often contaminated by atmospheric pollutants—to penetrate the protective surface of the coating causing the substrate to rust or corrode. In fact, fractures in the paint can cause a painted panel to corrode at a *faster rate* than an unpainted panel. At each point where the paint film has been opened, electrochemical cells invade to promote greater and faster corrosive attack. The result is accelerated corrosion in these areas because of the tendency to remain wet longer.



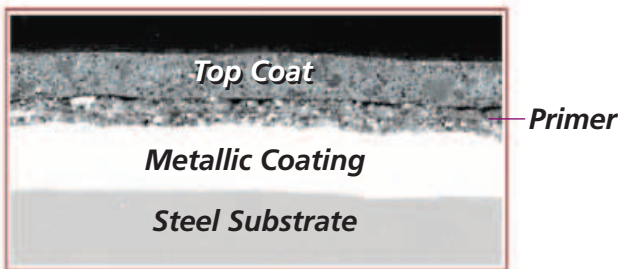
Overview of competitor panel magnified 30x



Overview of Everlast II® OMNI Heat Formed™ panel magnified 30x



Cross section of a competitor panel at 250x

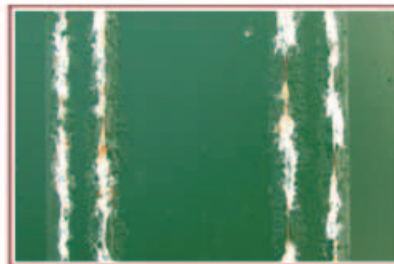


Cross section of an Everlast II® OMNI panel Roll Formed at 183° 250x



Photo micrographs taken from this area on the panel

The photos above show how Everlast II's® OMNI Heat Formed™ panel outlasts the competitor's panel. The Heat Formed™ panel creates a paint system that is more flexible and therefore better able to withstand the rigors of the forming process. Paint coverage is not compromised and the result is outstanding barrier protection. This barrier protection prevents corrosion by isolating the steel from the environment.



Overview of a competitor panel exposed to 1,500 hours of accelerated acid rain testing

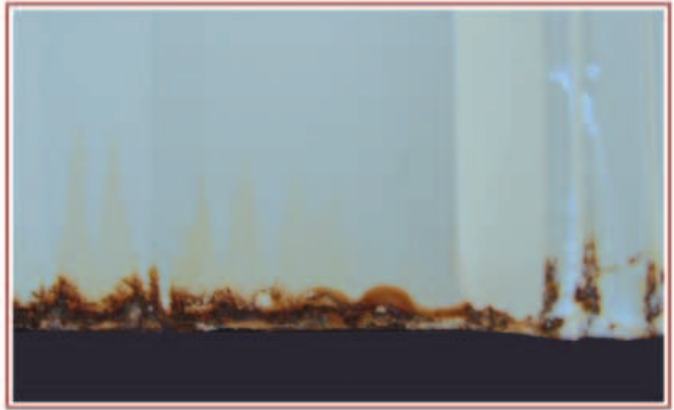


Overview of an Everlast II® OMNI panel exposed to 1,500 hours of accelerated acid rain testing

TO LAST A LIFETIME

4 **CECI™** CECI™ IS A CLEAR CORROSION INHIBITOR

Everlast's CECI™ (Cut-Edge Corrosion Inhibitor) effectively decreases the corrosion rate of the factory cut edge. This application is applied to the factory cut edge of all Everlast II's® OMNI Panels. Because the corrosion inhibitor applied is a clear product, end-users will see virtually no sign of CECI™ as it quietly protects and effectively decreases corrosion rates, as proven through industry research. The goal at Everlast Roofing is to incorporate cut-edge technological advances to our products, ensuring the highest standard of quality. CECI™ is another step in Everlast's commitment to bringing the metal marketplace the finest materials in quality building components.



Overview of a competitor panel exposed to 48 weeks of salt spray testing at 45° South Florida



Overview of an Everlast II® panel without CECI™ exposed to 48 weeks of salt spray testing at 45° South Florida



Overview of an Everlast II® panel with CECI™ exposed to 48 weeks of salt spray testing at 45° South Florida

CECI™ effectively decreases the corrosion rate of factory cut edge

